



SHIFTING TRADE SEMINAR

Exhibitor Prospectus

This popular event brings together key port industry leaders, shippers, economists, beneficial cargo owners, real estate developers, and more to give their insights on constantly shifting trade patterns and the resulting impact on seaports and the supply chain. Stay ahead of the curve by reserving your space.

Limited spaces are available, and will be allocated on a first-come, first-served basis.

Registration Cost for Tabletop Exhibits

	MEMBER	NON-MEMBER
Tabletop Exhibit (includes one registration)	\$2,075	\$2,725
Tabletop Exhibit (includes two registrations)	\$2,675	\$3,050
Extra Exhibitor Registrations	\$450	\$550

What is Included in Your Registration?

- Breakfast, lunch, and breaks will be held in the Exhibit Hall on Wednesday and Thursday.
- Wednesday evening reception will be held in the Exhibit Hall.
- Pre-registered attendees' lists will be sent to tabletop representatives two weeks before the seminar.
- Access to the Welcome and Opening Remarks and training sessions.

Tabletop Guidelines

- Set-up time will begin at 7:00 a.m. on Wednesday, January 26.
- Tabletops must be set up by 8:00 a.m. on Wednesday, January 26.
- Table assignments will be provided on-site.
- A 6-foot skirted table will be provided. All materials must be contained on the table. Floor displays are allowed; however, they must be placed directly behind the 6-foot skirted table.
- All exhibit materials must be removed by 11:00 a.m. on Thursday, January 27.



aapa-ports.org



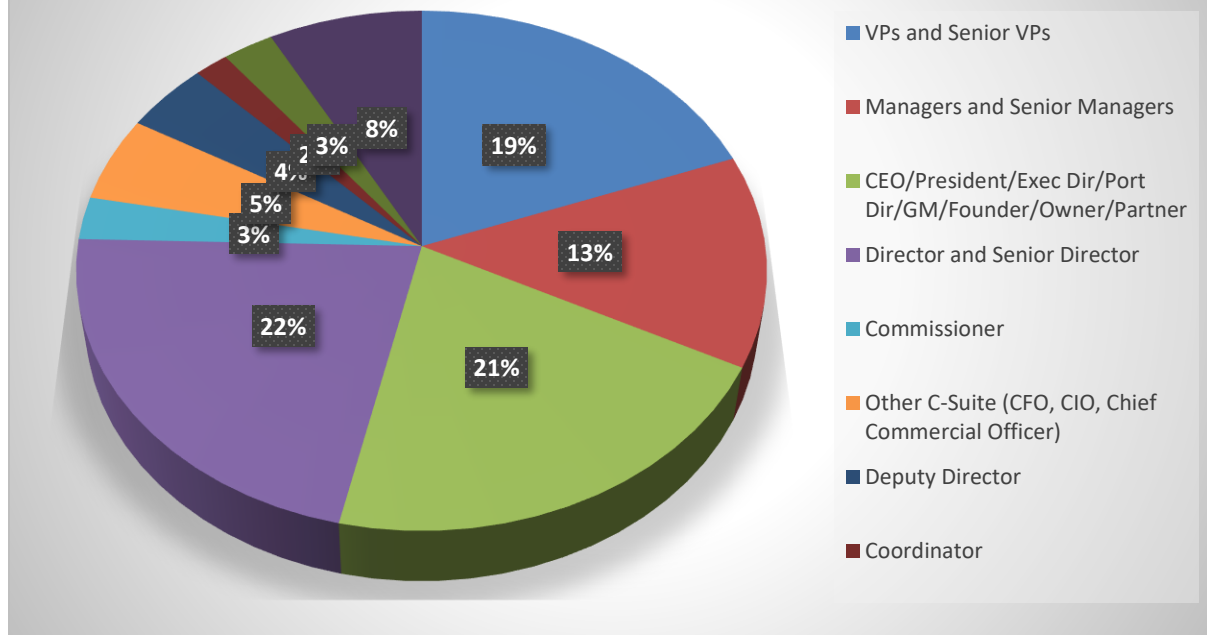
[@seaportsdeliverprosperity](https://www.facebook.com/seaportsdeliverprosperity)



[@AAPA_Seaports](https://twitter.com/AAPA_Seaports)



Job Functions and Titles: 2020



Some of the Ports Represented in 2020

Albany Port District Commission
 Barbados Port Inc.
 Belledune Port Authority
 Canaveral Port Authority
 Duluth Seaway Port Authority
 Florida Ports Council
 Freeport Harbour Company (Bahamas)
 Halifax Port Authority
 Jacksonville Port Authority (JAXPORT)
 Maryland Port Administration
 Mississippi State Port Authority at Gulfport
 NYK Ports LLC
 Panama Canal Authority
 Panama City Port Authority
 PhilaPort
 Plaquemines Port, Harbor and Terminal District
 Port Corpus Christi
 Port Everglades
 Port Freeport

Port Manatee
 Port Milwaukee
 Port of Cleveland
 Port of Grays Harbor
 Port of Hueneme/Oxnard Harbor District
 Port of Long Beach
 Port of Los Angeles
 Port of New Orleans
 Port of Pensacola
 Port of Seattle
 Port Tampa Bay
 PortMiami
 Quebec Port Authority
 Saguenay Port Authority
 Sociedad Portuaria Regional de Barranquilla
 The Northwest Seaport Alliance
 The Port Authority of New York & New Jersey
 Virginia Port Authority

Key Contacts

For any questions regarding the Shifting Trade Seminar, please reach out to one of the following contacts at AAPA:

- [Direna Cousins](#), Manager of Member Experience and Engagement, liaison for tabletop exhibitors.
- [Renita Gross](#), Director of Event Planning and Data Operations, liaison for registration and logistics.